

**SOCIAL
HOUSING
RETROFIT
ACCELERATOR**

Strategy Essentials Overview and FAQs

**Kate Watson, Principal Consultant
Turner & Townsend**

In partnership with:



HM Government

Agenda

- What is Strategy Essentials?
- Who is the course for?
- What will be covered?
- When will it take place?
- FAQs
- What else is available?

What is Strategy Essentials?

- Strategy Essentials is a **new course** from SHRA.
- Through this free programme, our expert speakers will help you create an **effective retrofit strategy** that provides you with a clear business case for your project.
- This course will be delivered on Microsoft Teams, with **three rotations of virtual webinars** running from September to November.

Who is the course for?

- This course is open to any housing providers that need support with creating or developing their retrofit strategy
- This course has been designed with **housing providers** in mind
 - For example, representatives from local authorities, combined authorities, housing associations, etc.
- If your organisation is not a housing provider, please do not register to attend this course

What will be covered?

1

Why develop a retrofit strategy?

2

Where are you now?

3

Where do you want to be?

4

How will you get there? (Retrofit phasing and financing)

5

How will you get there? (Retrofit team forming and stakeholder and resident engagement)

6

How will you get there? (Developing your strategy)

When will it take place?

September rotation

(Weekly)

- Friday 22 September
- Friday 29 September
- Friday 6 October
- Friday 13 October
- Friday 20 October
- Friday 3 November

November rotation 1

(Intensive)

- Tuesday 7 November
- Wednesday 8 November
- Thursday 9 November
- Tuesday 14 November
- Wednesday 15 November
- Thursday 16 November

November rotation 2

(Intensive)

- Tuesday 21 November
- Wednesday 22 November
- Thursday 23 November
- Tuesday 28 November
- Wednesday 29 November
- Thursday 30 November

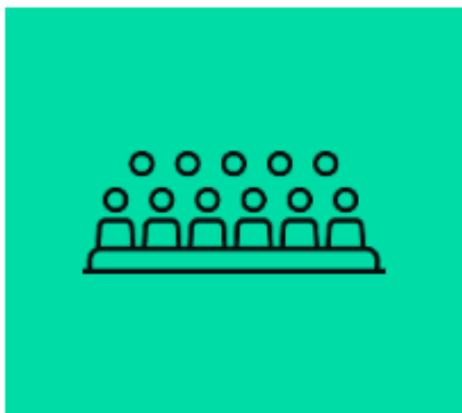
FAQs

- ❓ I won't be able to attend a module on my selected rotation. Can I join the same module in a future rotation?
- ❓ I have already attended the SHRA Retrofit Essentials course. Will this course still be relevant for me?
- ❓ Do I need to attend all six modules?

Learn more and register here:

<https://socialhousingretrofit.org.uk/knowledge-hub/latest-news-and-updates/strategy-essentials-a-brandnew-online-course>

What else is available?



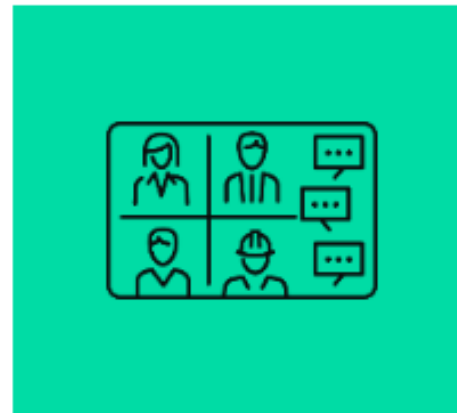
Events

We are hosting a series of webinars, workshops and briefings to help social housing providers develop their bids for the Social Housing Decarbonisation Fund (SHDF).



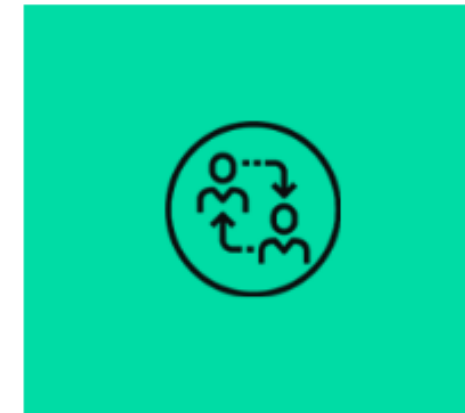
Masterclasses on-demand

Access a wealth of information and expert advice through the SHRA's comprehensive collection of on-demand masterclasses and insightful online events.



Podcasts

Our podcast series will help social housing providers develop their bids for the Social Housing Decarbonisation Fund (SHDF).



Retrofit Essentials

Retrofit Essentials is a free programme designed to provide social housing professionals with the essential knowledge needed to develop effective retrofit projects.

<https://socialhousingretrofit.org.uk/>

THANK YOU – ANY QUESTIONS?

Get in touch



info@socialhousingretrofit.org.uk



socialhousingretrofit.org.uk